

# Merchandise Bags

## 7 X 10 MERCHANDISE

White- #30. Kraft- #40.



Imprint	Item #	500	1000	3000	
FLEKO INK PRINT	10P710	0.76	0.62	0.54	A
DYNAMIC COLOR	DYP710	0.96	0.82	0.74	A
FOIL PRINT	10P710H	1.16	1.02	0.94	A
COLOR VISTA	CVP710	2.06	1.92	1.74	A

Shipping: 15 lbs. per box of 1000

Imprint Area: Front/Back - 5W x 6H (Dynamic Color)  
 Front - 5W x 6H (Flexo Ink Print, ColorVista)  
 Front - 4W x 4½H (Foil Print)

## 9 X 12 MERCHANDISE

White- #30. Kraft- #40.



Imprint	Item #	500	1000	3000	
FLEKO INK PRINT	10P912	0.80	0.66	0.58	A
DYNAMIC COLOR	DYP912	1.00	0.86	0.78	A
FOIL PRINT	10P912H	1.20	1.06	0.98	A
COLOR VISTA	CVP912	2.10	1.96	1.78	A

Shipping: 24 lbs. per box of 1000

Imprint Area: Front/Back - 7W x 7H (Dynamic Color)  
 Front - 7W x 7H (Flexo Ink Print, ColorVista)  
 Front - 5W x 5H (Foil Print)

## 11 X 13¾ MERCHANDISE

White- #30. Kraft- #40.



Imprint	Item #	500	1000	3000	
FLEKO INK PRINT	10P1113	0.84	0.70	0.62	A
DYNAMIC COLOR	DYP1113	1.04	0.90	0.82	A
FOIL PRINT	10P1113H	1.24	1.10	1.02	A
COLOR VISTA	CVP1113	2.14	2.00	1.82	A

Shipping: 35 lbs. per box of 1000

Imprint Area: Front/Back - 7W x 8H (Dynamic Color)  
 Front - 7W x 7H (Flexo Ink Print, ColorVista)  
 Front - 6W x 6½H (Foil Print)



FOIL PRINT 11 X 13¾

	FLEKO INK PRINT	DYNAMIC COLOR	FOIL PRINT	COLORVISTA
SET-UP	\$60 per color, per design (G).	\$50 per design (G).	\$80 per color, per design (G).	<b>NO SET-UP CHARGE.</b>
RE-ORDER SET-UP	<b>NO SET-UP CHARGE.</b>	\$30 per design (G).	<b>NO SET-UP CHARGE.</b>	<b>NO SET-UP CHARGE.</b>
ADDITIONAL LOCATION	N/A	\$0.20 per bag (G).	N/A	N/A
ADDITIONAL COLOR	\$0.18 per color, per side, per bag (G).	N/A	\$0.38 per color, per side, per bag (G).	N/A
PRODUCTION TIME *	4 business days after all final approvals.	10 business days after all final approvals.	4 business days after all final approvals.	6 business days after all final approvals.
COLUMN PRICING	Per bag, one-color imprint, one location. Plate charge is additional.	Per bag, multi-color imprint, one side. Set-up charge is additional.	Per bag, one-color imprint, one location. Plate charge is additional.	Per bag, multi-color imprint, one location. No set-up charge.
PLAIN BAGS	20% off the Flexo Print bag price. Ships next business day.			
BROKEN BOX CHARGE	\$10 (G) - Plain bags only.			
ART SPECS / IMPRINT COLORS	Refer to pages 192-196, 198, 205.			
RUSHES & ADDITIONAL SERVICES	Refer to pages 134-135, 192-194.			

\* Orders with more than 3,000 impressions will require extra production time.

# Merchandise Bags

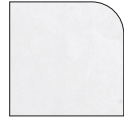


Unlined white or recycled brown kraft paper Merchandise Bags feature a serrated top and no gusset. (Brown kraft paper is made from 100% recycled material with a minimum of 60% post-consumer content.)

Bag Colors Available:



Kraft



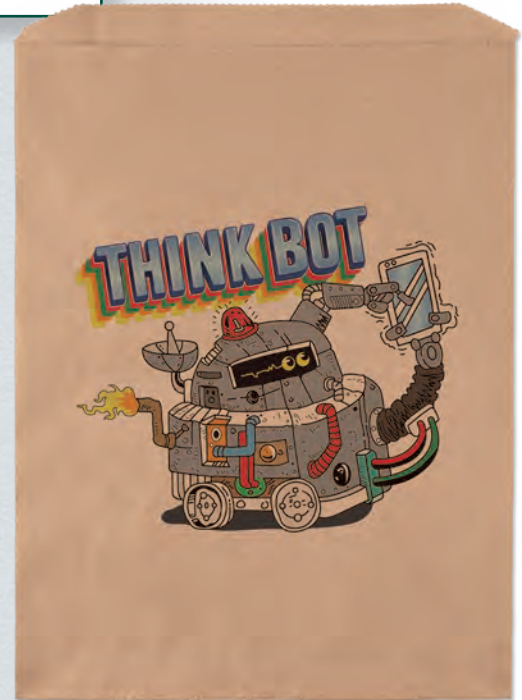
White



FLEXTM INK PRINT 11 X 13¾



DYNAMIC COLOR 7 X 10



DYNAMIC COLOR 9 X 12



COLOR VISTA 11 X 13¾